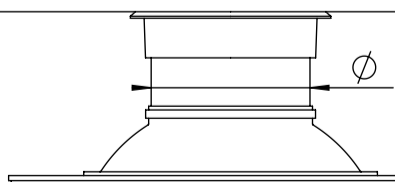
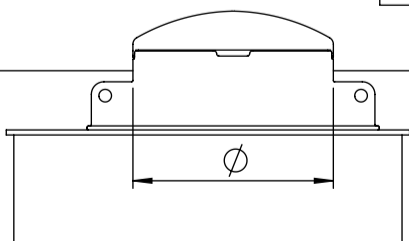
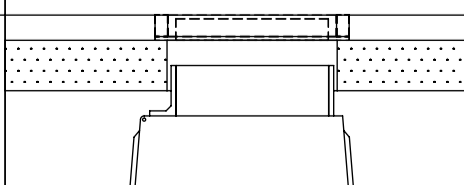
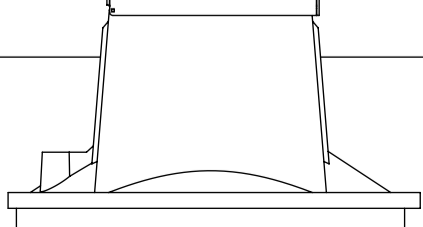


Pos.	Description	Material, Type	Size
1	Cover	PE / Cast iron	according to selection
2	Handrail, telescopic	AISI316	220x925
3	Service opening	PE	according to selection
4	Ladder, non slippery steps	AISI316	300x345
5	Air release valve	Steel	according to selection
6	Tank cylinder, double wall	PE100	ID1400, SN4
7	Ball valve / Gate valve AVK	AISI316 / Ductile iron	according to selection
8	Pressure pipe	PE100	according to selection
9	Bottom, steel reinforced	PE100 - Steel	100 mm
10	Anchor bolt W-FA	AISI316	M20x150, 12 pcs
11	Concrete plate, reinforced	Concrete	200x2200x2200
12	Backing rings	PP-Steel	according to selection
13	Bolts, nuts, washers	AISI316	M16

Ø795 cover PE (insulated) **A**    Ø630 cover cast iron 40t **B**



680x940 cover PE (insulated) **C**    600x1200 cover cast-iron 40t **D**  
600x940 free opening



Service opening type	A	B	C	D
Handrail, telescopic (not available for type "B")	YES / NO			
Pressure pipe depth from Ground Surface	H =	mm		
Pressure pipe diameter	D =	mm		
Air release valve type	Potable water		Sewage	
Air release valve connection	1"	2"	DN50	DN80    DN100

Drawn: A.Käärid  
Approved: J.Karolin

**Air release well ID1400 STRONG**

www.iwsgroup.ee	Mass: kg	Product code:	Rev.
<b>Innovative Water Systems</b>	<b>NA</b>	<b>505215 / ordersheet</b>	<b>0</b>