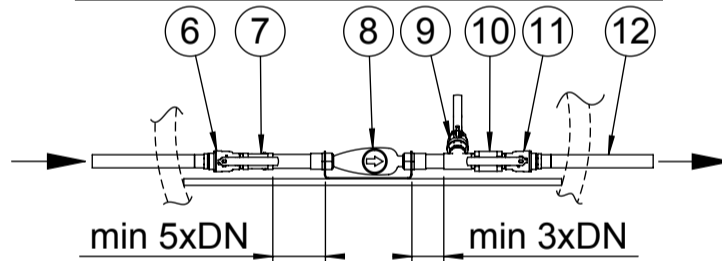


NB! Current composition DN32 max.



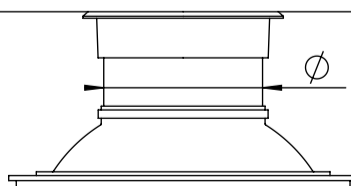
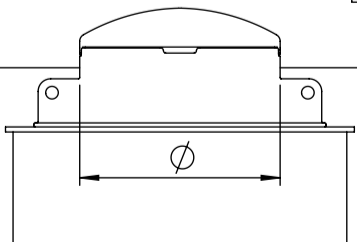
Pos.	Description	Material, Type	Size
1	Cover	PE / Cast iron	according to selection
2	Handrail, telescopic	AISI316	220x925
3	Service opening	PE	according to selection
4	Ladder, non slippery steps	AISI316	300x345
5	Tank cylinder, double wall	PE100	ID1200, SN4
6	Ball valve 1, for closing	Brass	according to selection
7	Mud stainer	Brass	according to selection
8	Watermeter, with console	Steel	according to selection
9	Ball valve 2, for emptying	Brass	according to selection
10	Non return valve	Brass	according to selection
11	Ball valve 3, for closing	Brass	according to selection
12	Pressure pipe	PE100	according to selection
13	Anchor bolt W-FA	AISI316	M20x150, 8 pcs
14	Bottom, steel reinforced	PE100 - Steel	100 mm
15	Concrete plate, reinforced	Concrete	200x2000x2000

Ø795 cover PE (insulated)

A

Ø630 cover cast iron 40t

B

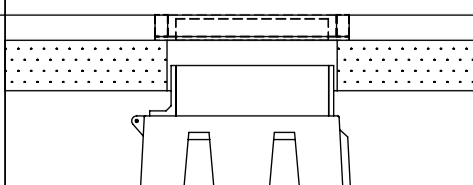
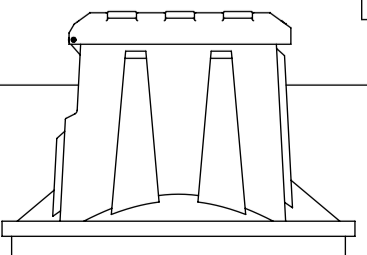


650x835 cover PE (insulated)

C

600x1200 cover cast iron 40t
600x835 free opening

D



Service opening type	A	B	C	D
Handrail, telescopic (not available for type "B")	YES / NO			
Pressure pipe depth from Ground Surface	H = mm			
Pressure pipe diameter	D = mm			
Watermeter size	DN =			
Mud stainer	YES	NO		
Non return valve	YES	NO		

Drawn:	A.Käärid	Watermeter well ID1200 STRONG
Approved:	J.Karolin	

www.iwsgroup.ee	Mass: kg	Product code:	Rev.
Innovative Water Systems	NA	505210 / ordersheet	0