

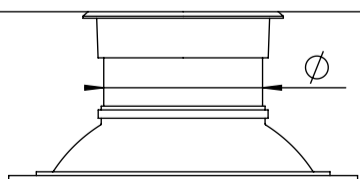
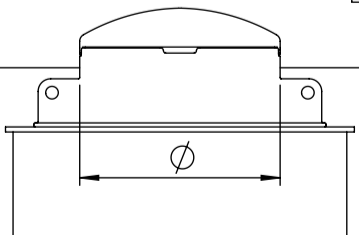
Pos.	Description	Material, Type	Size
1	Cover	PE / Cast iron	according to selection
2	Handrail, telescopic	AISI316	220x925
3	Service opening	PE	according to selection
4	Ladder, non slippery steps	AISI316	300x345
5	Tank cylinder, double wall	PE100	ID1200, SN4
6	Backing ring	PP - Steel	according to selection
7	Gate valve, AVK	Ductile iron, epoxy coated	according to selection
8	Flanged tee	Ductile iron, epoxy coated	according to selection
9	Tensile combi-flange	Ductile iron, epoxy coated	according to selection
10	Pressure pipe	PE100	according to selection
11	Anchor bolt W-FA	AISI316	M20x150, 8 pcs
12	Bottom, steel reinforced	PE100 - Steel	100 mm
13	Concrete plate, reinforced	Concrete	200x2000x2000
	Bolts, nuts, washers	AISI316	according to selection

Ø795 cover PE (insulated)

A

Ø630 cover cast iron 40t

B

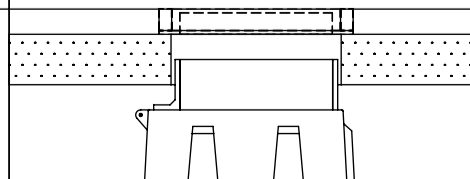
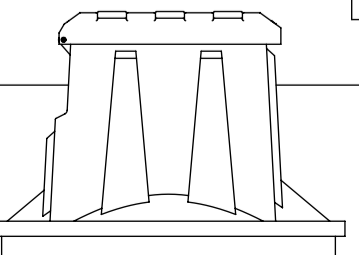


650x835 cover PE (insulated)

C

600x1200 cover cast iron 40t
600x835 free opening

D



Service opening type	A	B	C	D
Handrail, telescopic (not available for type "B")	YES / NO			
Pressure pipe depth from Ground Surface	H = mm			
Pressure pipe 1 diameter	D1 = mm			
Pressure pipe 2 diameter	D2 = mm			
Pressure pipe 3 diameter	D3 = mm			

Drawn: A.Käärid
Approved: J.Karolin

Valve chamber ID1200 STRONG

www.iwsgroup.ee
Innovative Water Systems Mass: kg Product code: Rev.
NA **505210 / ordersheet** **0**