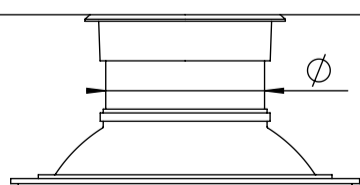
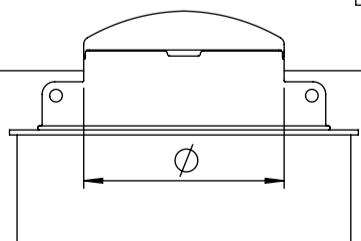


| Pos. | Nimetus | Materjal | Möödud |
|------|------------------------------------|-----------------------|--------------------|
| 1 | Luuk | PE / Malm | vastavalt valikule |
| 2 | Käsipuu, teleskoopne | AISI316 | 220x925 |
| 3 | Teenindusava | PE | vastavalt valikule |
| 4 | Redel, libisemiskindlate astmetega | AISI316 | 300x345 |
| 5 | Korpus | PE100 | ID1200, SN4 |
| 6 | Vabaäärrik | PP - Teras | vastavalt valikule |
| 7 | Kummikiilsiber, AVK | Malm, epoksiidkattega | vastavalt valikule |
| 8 | Kolmik | Malm, epoksiidkattega | vastavalt valikule |
| 9 | Kiirliite-äärrik, tõmbekindel | Malm, epoksiidkattega | vastavalt valikule |
| 10 | Survetoru | PE100 | vastavalt valikule |
| 11 | Kiilankur W-FA | AISI316 | M20x150, 8tk |
| 12 | Kaevu põhi, terasarmeeritud | PE100 - Teras | 100 mm |
| 13 | Betoonplaat | Raudbetoon | 200x2000x2000 |
| | Poldid, mutrid, seibid | AISI316 | vastavalt valikule |

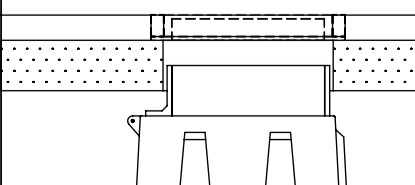
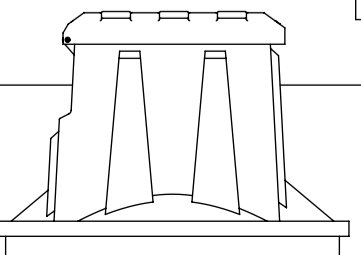
Ø795 luuk PE (soojustatud) A

Ø630 luuk malm 40t B



650x835 luuk PE (soojustatud) C

600x1200 luuk malm 40t D
600x835 vaba-ava



| Teenindusava tüüp | A | B | C | D |
|--|----------|---|---|----|
| Käsipuu, teleskoopne (pole saadaval tüübile "B") | JAH / EI | | | |
| Survetoru sügavus maapinnast | H = | | | mm |
| Survetoru 1 läbimõõt | D1 = | | | mm |
| Survetoru 2 läbimõõt | D2 = | | | mm |
| Survetoru 3 läbimõõt | D3 = | | | mm |

| | | |
|------------|-----------|---------------------------------|
| Joonestab: | A.Käärid | Siibrikaev ID1200 STRONG |
| Kinnitas: | J.Karolin | |

| | | | |
|---------------------------------|----------|------------------------------|----------|
| www.iwsgroup.ee | Mass: kg | Tootekood: | Rev. |
| Innovative Water Systems | NA | 505210 / tellimisleht | 0 |