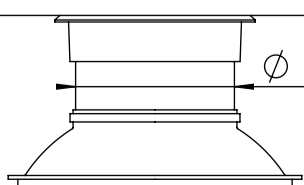
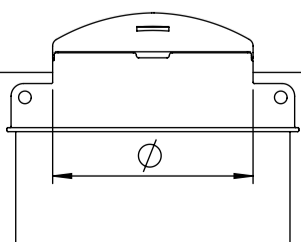


Pos.	Description	Material, Type	Size
1	Cover	PE / Cast iron	according to selection
2	Handrail, telescopic	AISI316	220x925
3	Service opening	PE	according to selection
4	Tank cylinder, double wall	PE100	ID1000, SN2
5	Ladder, non slippery steps	AISI316	300x345
6	Backing ring	PP - Steel	according to selection
7	Gate valve, AVK	Ductile iron, epoxy coated	according to selection
8	Flanged tee	Ductile iron, epoxy coated	according to selection
9	Tensile combi-flange	Ductile iron, epoxy coated	according to selection
10	Pressure pipe	PE100	according to selection
11	Bottom	PE100	20 mm
	Bolts, nuts, washers	AISI316	according to selection

Service opening type	A	B
Handrail, telescopic (not available for type "B")	YES / NO	
Pressure pipe depth from Ground Surface	H =	mm
Pressure pipe 1 diameter	D1 =	mm
Pressure pipe 2 diameter	D2 =	mm
Pressure pipe 3 diameter	D3 =	mm

Ø795 cover PE (insulated)	A	Ø630 cover cast iron 40t	B
---------------------------	----------	--------------------------	----------



Drawn:	A.Käärid	Valve chamber ID1000 STRONG		
Approved:	J.Karolin			
www.iwsgroup.ee		Mass: kg	Product code:	Rev.
Innovative Water Systems		NA	505205 / ordersheet	0