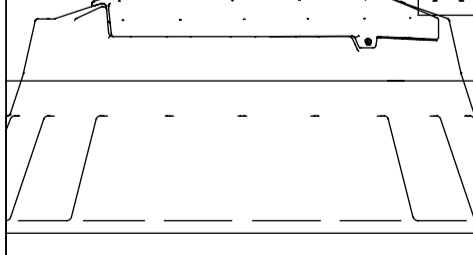
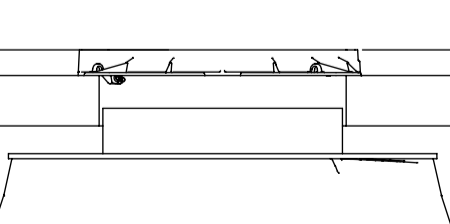


Pos.	Description	Material, Type	Size
1	Cover	PE / Cast iron	according to selection
2	Handrail, telescopic	AISI316	270x1620
3	Service opening	PE	according to selection
4	Ladder, non slippery steps	AISI316	300x280
5	Tank cylinder, double wall	PE100	ID2000, SN4
6	Backing ring	PP - Steel	according to selection
7	Gate valve, AVK	Ductile iron, epoxy coated	according to selection
8	Flanged tee	Ductile iron, epoxy coated	according to selection
9	Tensile combi-flange	Ductile iron, epoxy coated	according to selection
10	Pressure pipe	PE100	according to selection
11	Bottom	PE100/Concrete	180 mm
12	Bottom anchor plates	Concrete	280 mm
	Bolts, nuts, washers	AISI316	according to selection

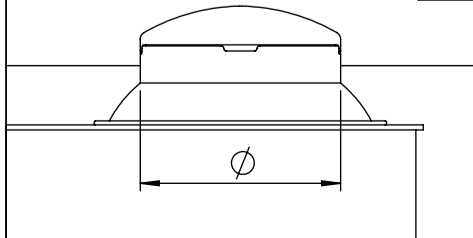
895x1470 cover PE(insulated) A



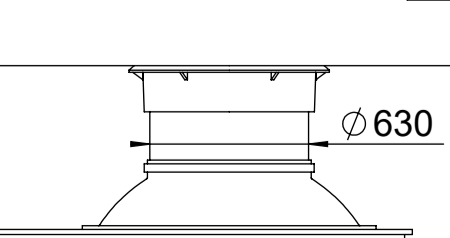
DN800 cover cast-iron 40t Ø800 free opening B



Ø795 cover PE (insulated) C



DN600 cover cast iron 40t D



Service opening type	A <input type="checkbox"/> B <input type="checkbox"/> C <input type="checkbox"/> D <input type="checkbox"/>
Handrail, telescopic (not available for type "B")	<input type="checkbox"/> YES / NO <input type="checkbox"/>
Pressure pipe depth from Ground Surface	H = mm
Pressure pipe 1 diameter	D1 = mm
Pressure pipe 2 diameter	D2 = mm
Pressure pipe 3 diameter	D3 = mm

Drawn:	K.Käbi	Valve chamber ID2000 STRONG		
Approved:				
www.iwsgroup.ee		Mass: kg	Product code:	Rev.
Innovative Water Systems		NA	505225 / ordersheet	4