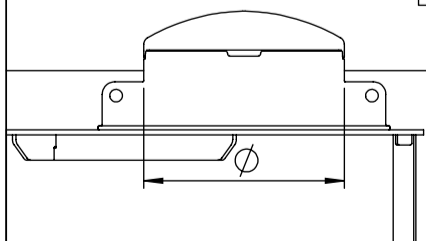
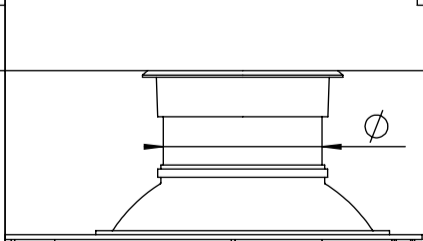


Pos.	Description	Material, Type	Size
1	Cover	PE / Cast iron	according to selection
2	Handrail, telescopic, HAILO	AISI316	270x1620
3	Service opening	PE	according to selection
4	Ladder, non slippery steps, HAILO	AISI316	300x340
5	Tank cylinder, double wall	PE100	ID1600, SN4
6	Backing ring	PP - Steel	according to selection
7	Gate valve, AVK	Ductile iron, epoxy coated	according to selection
8	Flanged tee	Ductile iron, epoxy coated	according to selection
9	Tensile combi-flange	Ductile iron, epoxy coated	according to selection
10	Pressure pipe	PE100	according to selection
11	Bottom	PE/Concrete	155 mm
	Bolts, nuts, washers	AISI316	according to selection

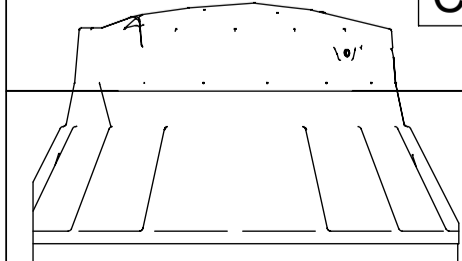
Ø795 cover PE (insulated) **A**



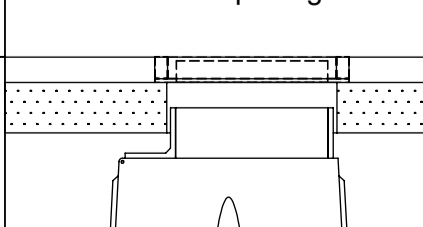
Ø630 cover cast iron 40t **B**



640x1100 cover PE (insulated) **C**



600x1200 cover cast-iron 40t **D**
600x1100 free opening



Service opening type	A <input type="checkbox"/> B <input type="checkbox"/> C <input type="checkbox"/> D <input type="checkbox"/>
Handrail, telescopic (not available for type "B")	<input type="checkbox"/> YES / NO <input type="checkbox"/>
Pressure pipe depth from Ground Surface	H =mm
Pressure pipe 1 diameter	D1 =mm
Pressure pipe 2 diameter	D2 =mm
Pressure pipe 3 diameter	D3 =mm

Drawn:	E.Ehala	Valve chamber ID1600 STRONG
Approved:	J.Karolin	

Innovative Water Systems	www.iwsgroup.ee	Mass: kg	Product code:	Rev.
	NA	505220 / ordersheet	2	