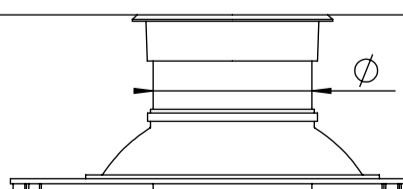
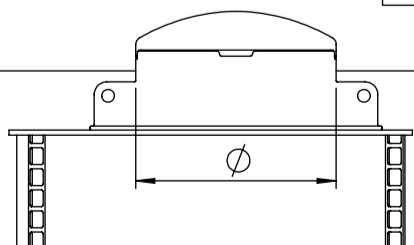
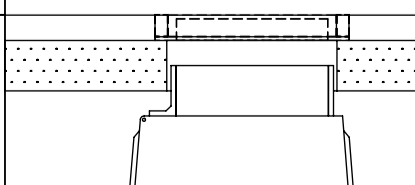
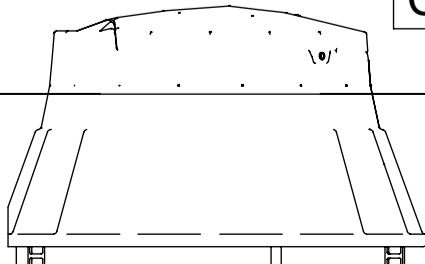


| Pos. | Description | Material, Type | Size |
|------|-----------------------------------|----------------------------|------------------------|
| 1 | Cover | PE / Cast iron | according to selection |
| 2 | Handrail, telescopic, HAILO | AISI316 | 270x1620 |
| 3 | Service opening | PE | according to selection |
| 4 | Ladder, non slippery steps, HAILO | AISI316 | 300x340 |
| 5 | Tank cylinder, double wall | PE100 | ID1400, SN4 |
| 6 | Backing ring | PP - Steel | according to selection |
| 7 | Gate valve, AVK | Ductile iron, epoxy coated | according to selection |
| 8 | Flanged tee | Ductile iron, epoxy coated | according to selection |
| 9 | Tensile combi-flange | Ductile iron, epoxy coated | according to selection |
| 10 | Pressure pipe | PE100 | according to selection |
| 11 | Bottom | PE/Concrete | 155 mm |
| | Bolts, nuts, washers | AISI316 | according to selection |

Ø795 cover PE (insulated) **A** Ø630 cover cast iron 40t **B**



640x1100 cover PE (insulated) **C** 600x1200 cover cast-iron 40t 600x1100 free opening **D**



| | |
|---|---|
| Service opening type | A <input type="checkbox"/> B <input type="checkbox"/> C <input type="checkbox"/> D <input type="checkbox"/> |
| Handrail, telescopic (not available for type "B") | <input type="checkbox"/> YES / NO <input type="checkbox"/> |
| Pressure pipe depth from Ground Surface | H =mm |
| Pressure pipe 1 diameter | D1 =mm |
| Pressure pipe 2 diameter | D2 =mm |
| Pressure pipe 3 diameter | D3 =mm |

Drawn: E.Ehala
 Approved: J.Karolin

Valve chamber ID1400 STRONG

| | | | |
|---------------------------------|-----------|----------------------------|----------|
| www.iwsgroup.ee | Mass: kg | Product code: | Rev. |
| Innovative Water Systems | NA | 505215 / ordersheet | 2 |