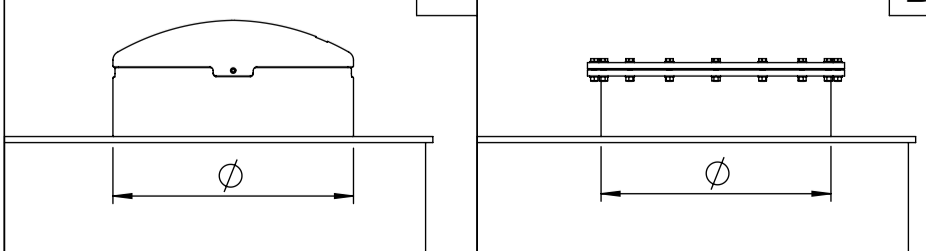


Pos.	Description	Material	Size
1	Cover	PE	according to selection
2	Service opening	PE	according to selection
3	Inlet pipe	PE100	according to selection
4	Tank cylinder, double wall	PE100	ID2000, SN4
5	Outlet pipe	PE100	according to selection
6	Bottom	PE100	20 mm
7	Anchor bolt W-FA	AISI316	M20x180, 12 pcs
8	Ladder with handrail, non slippery steps	AISI316	optional
9	Service border H1100	AISI304	optional
10	Safety cage for ladder	AISI304	optional

Volume V (m3)	Height H (mm)	Product code
6	2040	502006
8	2640	502008
10	3240	502010
12	3940	502012
13	4240	502013
14	4540	502014
16	5140	502016

Volume	V=	m3
Service opening type	A	B
Ladder with handrail, non slippery steps	YES / NO	
Service border H1100	YES / NO	
Safety cage for ladder	YES / NO	
Outlet pipe diameter	DN1 =	
Outlet pipe from bottom plate	H1 =	mm
Inlet pipe diameter	DN2 =	
Inlet pipe from ceiling plate	H2 =	mm
Inlet angle (measured clockwise from OUTLET)	α =	°
Ladder angle (measured clockwise from OUTLET)	β =	°

Ø760 cover PE (insulated) **A** Ø760 cover PE (with gasket) **B**



Drawn:	A.Käärid	Above-ground tank ID2000 STRONG
Approved:	J.Karolin	
www.iwsgroup.ee		Mass: kg
Innovative Water Systems		Product code:
		NA 5020 / ordersheet 0
		Rev. 0